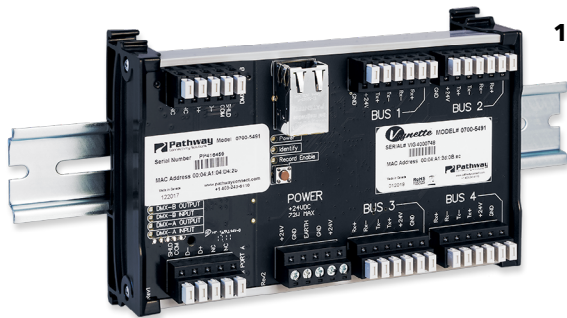


VIGNETTE 485 ARCHITECTURAL GATEWAY



Models shown: 1. PWGW DIN VD2

WARRANTY

3-year limited warranty. Complete warranty terms located at:
<https://www.acuitybrands.com/support/warranty>

NOTE

Actual performance may differ as a result of end-user environment and application. Specifications subject to change without notice.

OVERVIEW

The Vignette™ DIN-mount Architectural Gateway provides connectivity for Vignette 485 wall stations (PWWSI V485) using a multi-drop serial data bus for recording and recall of lighting snapshots.

The Gateway has four separate buses, accommodating up to 16 inserts. The Ethernet port provides connection back to the main lighting network and communication with the controller for recording snapshots.

The device comes in a variety of configurations with or without auxiliary contact closures & buttons, DMX in and Thru/Out, and additional Ethernet connectivity.

FEATURES

- Power and network connectivity for Vignette 485 wall station inserts (PWWSI V485), with optional DMX512 ports and Contact Closures/Test Buttons
- Configure up to 4 groupings of presets allows one Gateway to achieve asynchronous fades across four rooms
- Allows using legacy multi-drop wiring where PoE home-runs are not feasible
- Use third-party buttons/dry contact closure to trigger snapshot replay [VD2C8, VC16, VEC8 Models]
- Stand-alone mode with 8 or 16 momentary buttons and LED indicators allows the Gateway to be used as its own Button Station [VD2C8, VC16, VEC8 Models]
- Advanced configuration using free Pathscape software of sACN output universes, sACN priorities, crossfade timing and the function of the optional DMX512 ports
- DMX512 outputs will crossfade between presets and incoming source when present; no blackouts
- DMX512 outputs will subtly crossfade between architectural presets and theatrical controller when on-line; no sudden blackouts [PWGW DIN VD2 and PWGW DIN VD2C8]
- In pure sACN systems, the Architectural Gateway can record and play back four universes of sACN
- With the use of Pathport Gateways (PWPP), can record and playback up to four universes of DMX512
- Compression-screw and Insulation Displacement Contact connectors for DMX512 connections and station buses
- Mounts to standard 35mm DIN rail
- Operates on 24VDC

ORDERING INFORMATION

PWGW		EXAMPLE: PWGW DIN VD2C8	
Series	Form Factor	Model	
PWGW Pathway Architectural Gateway	DIN DIN-mount	V	Vignette Architectural Gateway; no additional inputs/outputs/buttons (4.5")
		VD2	Vignette Architectural Gateway with 2 DMX Ports (6.25")
		VD2C8	Vignette Architectural Gateway with 2 DMX Ports & 8 Contact Closures/Buttons (8")
		VC16	Vignette Architectural Gateway with 16 Contact Closures/Buttons (8")
		VE	Vignette Architectural Gateway with Secondary Ethernet (6.25")
		VE2C8	Vignette Architectural Gateway with Secondary Ethernet & 8 Contact Closures/Buttons (8")

Accessories	
PWPWR DIN TERM 100W 24VDC	Power Supply, DIN-mount, Compression Fit Terminal, 100 Watts, 24 Volts DC
PWENC SHELF HOR	DIN System Enclosure, 2-RU Shelf unit with 2x16.5", Horizontal Rails
PWENC SML VER	DIN System Enclosure, Small 10" x 13" x 4.5", Vertical Rails
PWENC MED VER	DIN System Enclosure, Medium 10" x 23" x 4.5", Vertical Rails
PWENC SML HOR	DIN System Enclosure, Small 10" x 13" x 4.5", Horizontal Rails
PWENC MED HOR	DIN System Enclosure, Medium 10" x 23" x 4.5", Horizontal Rails
PWENC LRG VER	DIN System Enclosure, Large 18.5" x 31.5" x 6.25", Vertical Rails
PWCON SPARE IDC5 Q4	Connector, Spare, 5-Pin Insulation Displacement Contact Connector, (Qty 4)
PWCON SPARE CSC5 Q4	Connector, Spare, 5-Pin Compression Screw Connector, (Qty 4)
PWCON SPARE IDC6 Q2	Connector, Spare, 6-Pin Insulation Displacement Contact Connector, (Qty 2)
PWCON SPARE CSC6 Q2	Connector, Spare, 5-Pin Compression Screw Connector, (Qty 2)

SPECIFICATIONS

Electrical	Input Ratings	24VDC power input 72W maximum power consumption; 8W per gateway plus 1W per insert (64 maximum) on the 4-port station bus network
	Cabling	Standard CAT5/5e/6 Cable, 492 ft (150 m) maximum, or Retrofit onto existing 3-pair Belden 9773 or equivalent, 984 ft (300m) maximum
	Regulatory Compliance	CE

Mechanical	Dimensions	PWGW DIN V 4.5" W x 4" H x 1.9" D (113mm W x 103mm H x 48mm D) PWGW DIN VD2 6.25" W x 4" H x 1.9" D (159mm W x 103mm H x 48mm D) PWGW DIN VD2C8 8" W x 4" H x 1.9" D (203mm W x 103mm H x 48mm D) PWGW DIN VC16 8" W x 4" H x 1.9" D (203mm W x 103mm H x 48mm D) PWGW DIN VE 6.25" W x 4" H x 1.9" D (159mm W x 103mm H x 48mm D) PWGW DIN VE2C8 8" W x 4" H x 1.9" D (203mm W x 103mm H x 48mm D)
	Weight	1.0 lbs (0.45 kg)

Environmental	Operating Temperature	14°F to 113°F (-10°C to 45°C)
	Relative Humidity	5-95%, non-condensing
	Standard Compliance	RoHS 2011/65/EU + A1 2015/863

General	Compliance	ANSI E1.11 DMX512-A R2013 ANSI E1.20 RDM - Remote Device Management ANSI E1.31 sACN - Streaming ACN ANSI E1.33 RDMnet - RDM over IP IEEE 802.3 Ethernet California Title 1.81.26, Security of Connected Devices
----------------	-------------------	--

PART NUMBER CROSS-REFERENCE

PREVIOUS		NEW
Part Number	Catalog Number	Description
0700-5490	PWGW DIN V	Architectural Gateway, DIN-mount, Vignette (4.5")
0700-5491	PWGW DIN VD2	Architectural Gateway, DIN-mount, Vignette w 2 DMX (6.25")
0700-5492	PWGW DIN VD2C8	Architectural Gateway, DIN-mount, Vignette w 2 DMX & 8 Contact Closures (8")
0700-5493	PWGW DIN VC16	Architectural Gateway, DIN-mount, Vignette w 16 Contact Closures (8")
0700-5494	PWGW DIN VE	Architectural Gateway, DIN-mount, Vignette w Secondary Ethernet (6.25")
0700-5495	PWGW DIN VE2C8	Architectural Gateway, DIN-mount, Vignette w Secondary Ethernet & 8 Contact Closures (8")

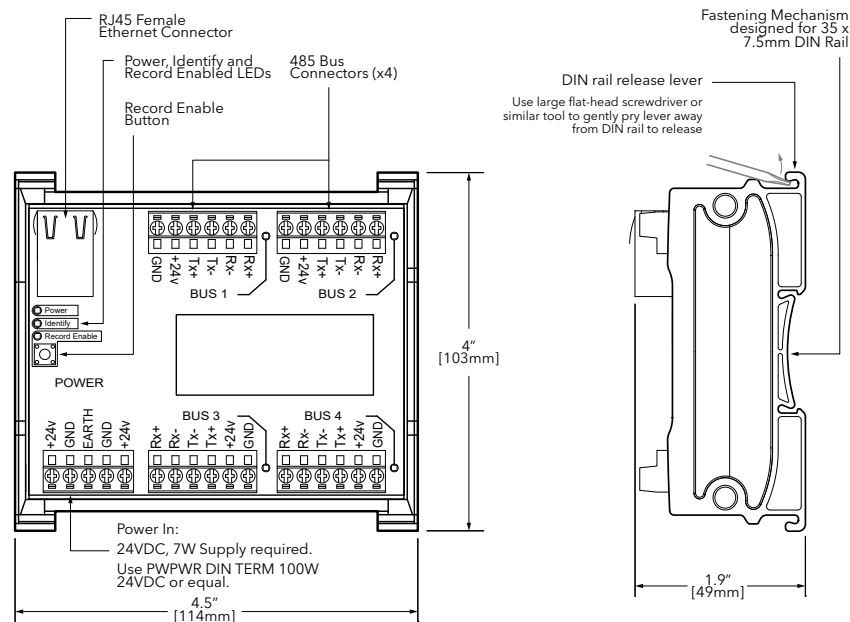
WIRING

DMX512 / RDM PINOUT		
Purpose	XLR / Terminal Block Pin #	RJ45 PIN # and Wire Color
Shield / Common	1	7 - White / Brown
Data - (complement)	2	2 - Orange
Data + (true)	3	1 - White / Orange
Not Used	4	6 - Green
Not Used	5	3 - White / Green
Not Used - Do Not Connect	N/A	4 - Blue
Not Used - Do Not Connect	N/A	5 - White / Blue
Not Used - Do Not Connect	N/A	8 - Brown

DIMENSIONS

PWGW DIN V

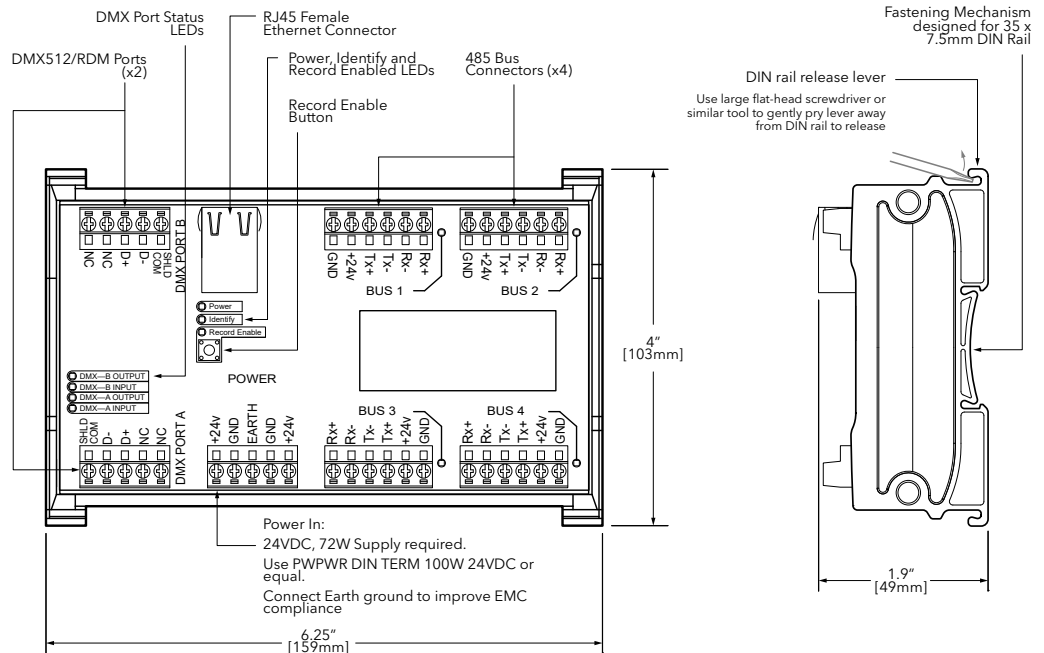
- Four buses, each capable of powering 16 inserts, 64 total
- Ethernet configuration using Pathscape and sACN capture and playback
- Record Enable button for Press-and-Hold to record a snapshot on any Vignette button insert



DIMENSIONS

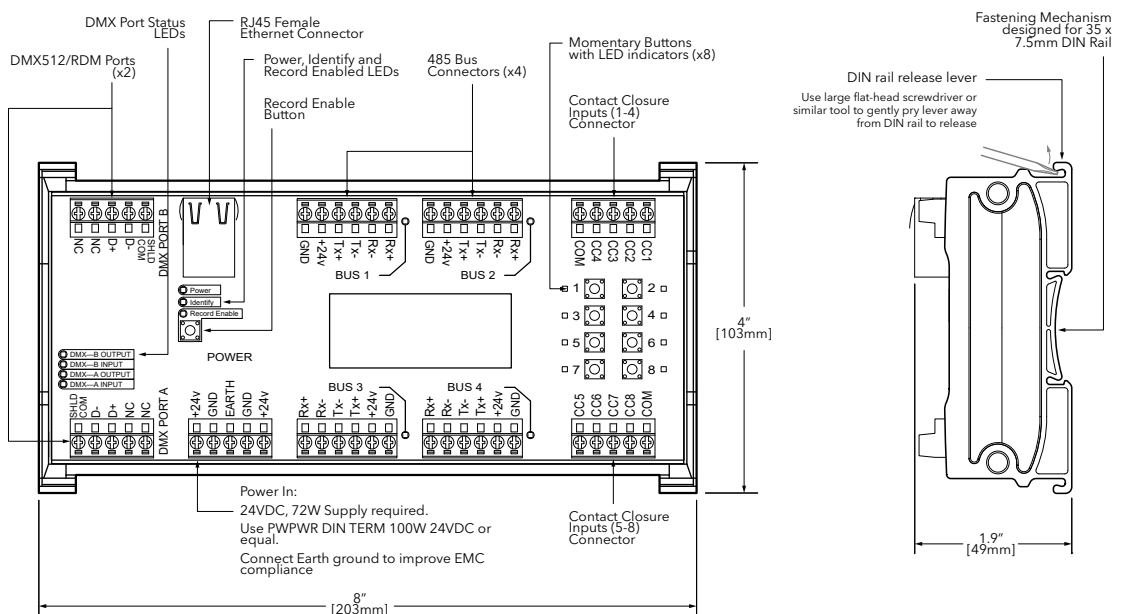
PWGW DIN VD2

- Four buses, each capable of powering 16 inserts, 64 total
- Two DMX Ports that can be configured as Input for capture, Output for Playback of snapshots to DMX512 gear, or Input and Output/ Thru for priority or HTP of Vignette snapshots and theatrical control
- Ethernet configuration using Pathscape and sACN capture and playback



PWGW DIN VD2C8

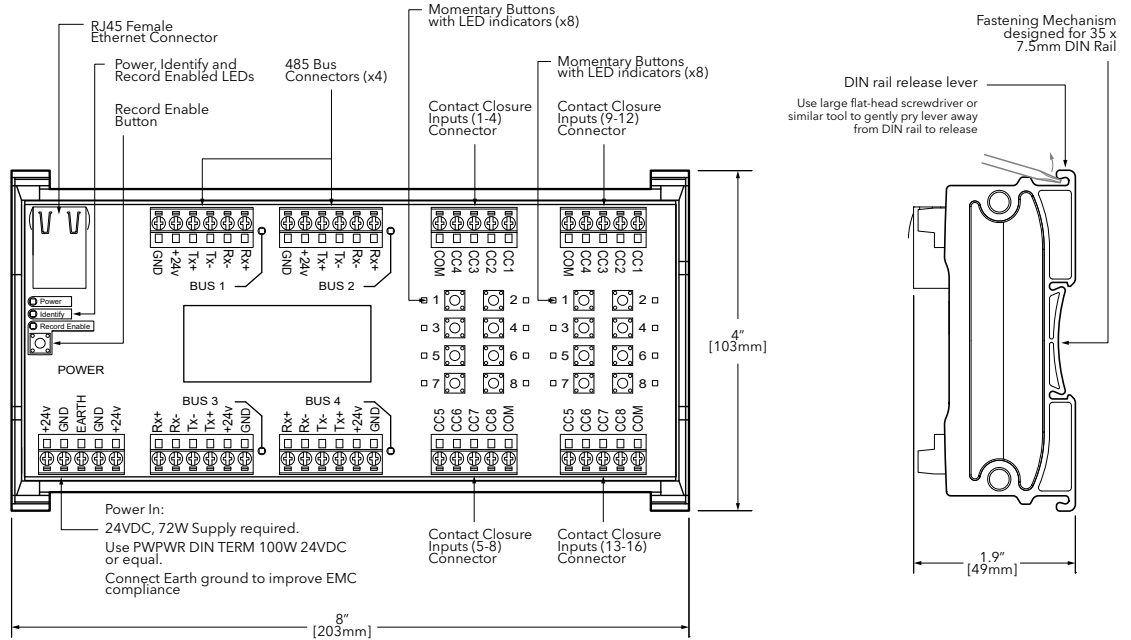
- Four buses, each capable of powering 16 inserts, 64 total
- DMX512 and/or sACN capture and playback
- Stand-alone mode with 8 dedicated momentary buttons and LED indicators allows the device to be used as its own 8-button station, without needing Vignette stations on the bus
- 8 contact closure inputs for A/V and third-party control



DIMENSIONS

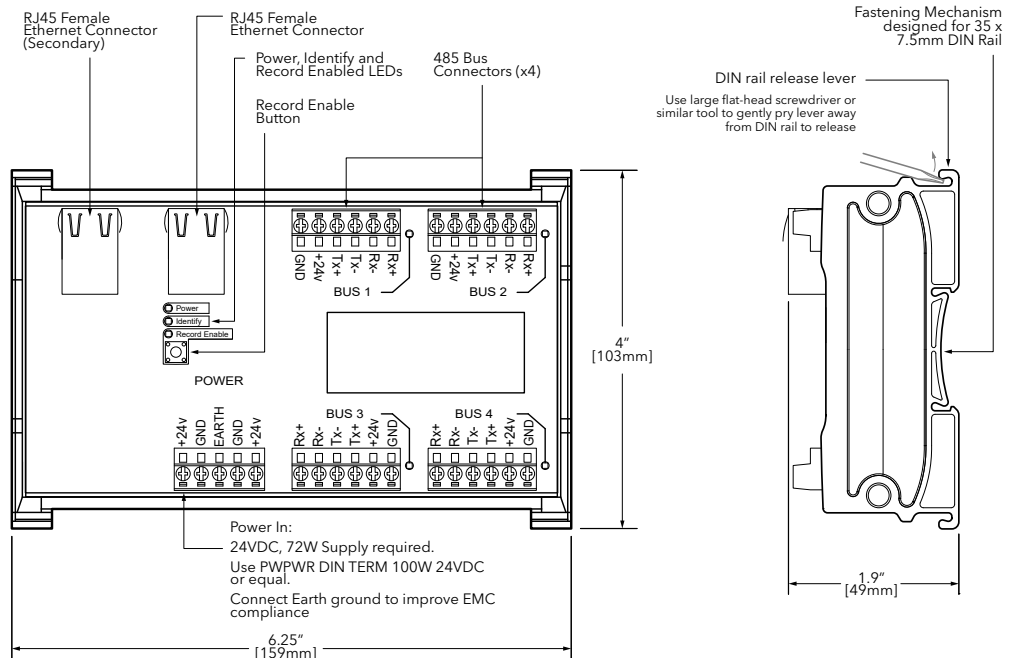
PWGW DIN VC16

- Four buses, each capable of powering 16 inserts, 64 total
- 16 momentary buttons and LED indicators allows the device to be used as its own 16-button station, or simply to test snapshots or functions
- 16 contact closure inputs for A/V integration of third-party push-buttons with or without Vignette stations



PWGW DIN VE2

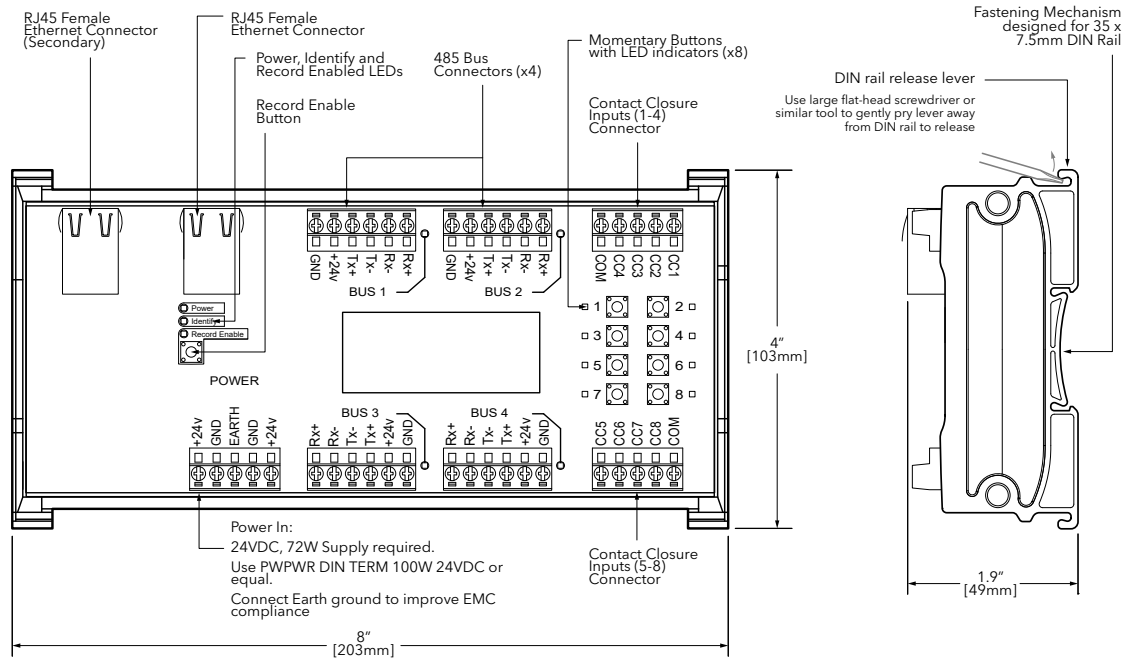
- Four buses, each capable of powering 16 inserts, 64 total
- Secondary Ethernet port helps reduce port consumption on switches
- Works without a switch when paired with PWPP DIN P4 Pathport DMX/RDM Gateway for recording and playing back up to 2048 DMX slots
- PWPP DIN P4 can be configured to HTP two universes between theatrical console and Vignette snapshots or prioritize show controller over house-light control



DIMENSIONS

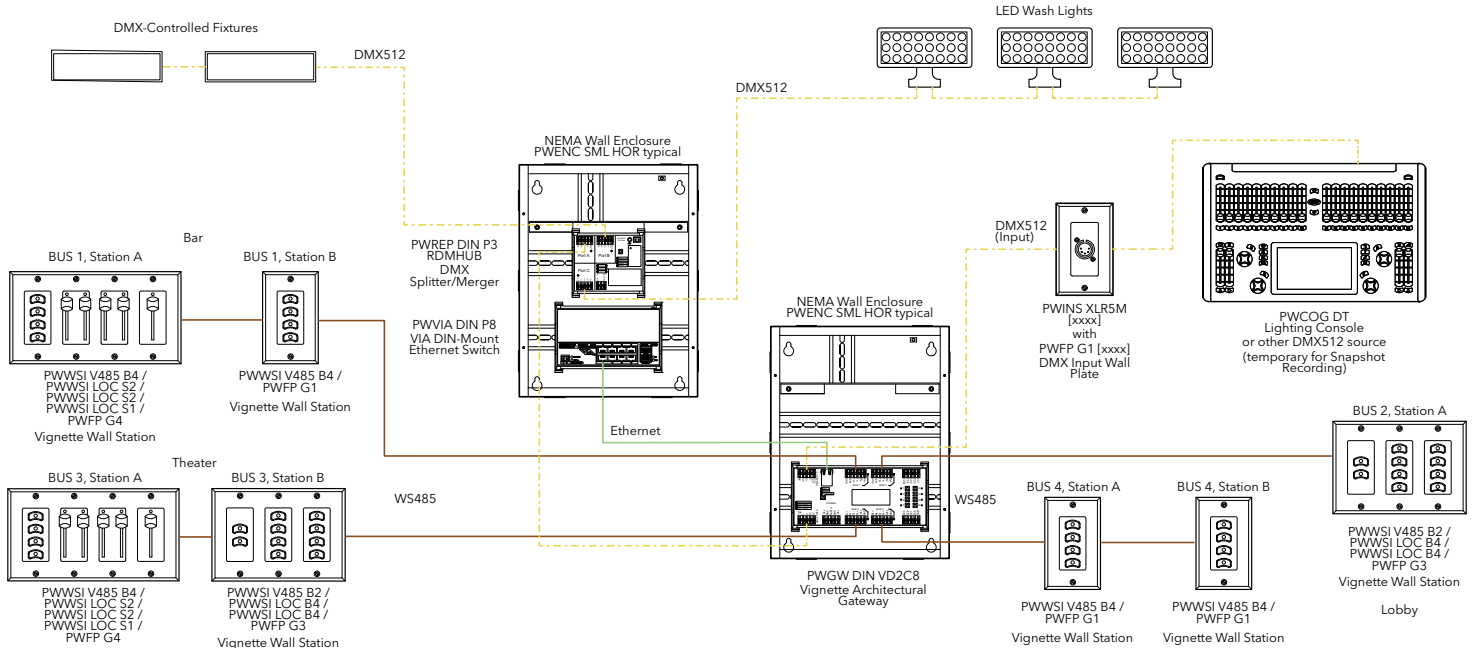
PWGW DIN VE2C8

- Four buses, each capable of powering 16 inserts, 64 total
- Works without a switch when paired with PWPP DIN P4 Pathport DMX/RDM Gateway for recording and playing back up to 2048 DMX slots
- PWPP DIN P4 can be configured to HTP two universes between theatrical console and Vignette snapshots or prioritize show controller over house-light control
- Stand-alone mode with 8 dedicated momentary buttons and LED indicators allows the device to be used as its own 8-button station, without needing Vignette stations on the bus
- 8 contact closure inputs for A/V and third-party control



APPLICATION RISER

Vignette 485 Snapshot across 4 rooms



PWGW DIN VE2C8 With PWPP DIN P4 - 2 Universe Priority/Merge System

